

海能風力發電股份有限公司

營運綜合分析摘要報告

Executive Summary

112 年 7 月

目錄

| | |
|-----------------------------------|---|
| 一、簡介 Introduction | 1 |
| 二、業務報告 Business Report | 2 |
| 1.裝置容量 Capacity | 2 |
| 2.發電量 Production..... | 2 |
| 3.發電設備運作情形 Operating Status | 2 |
| 4.售予公用售電業之售電量 Power Sale | 2 |
| 三、財務報告 Financial Report..... | 3 |
| 收支實績比較表 Revenue and Expense..... | 3 |

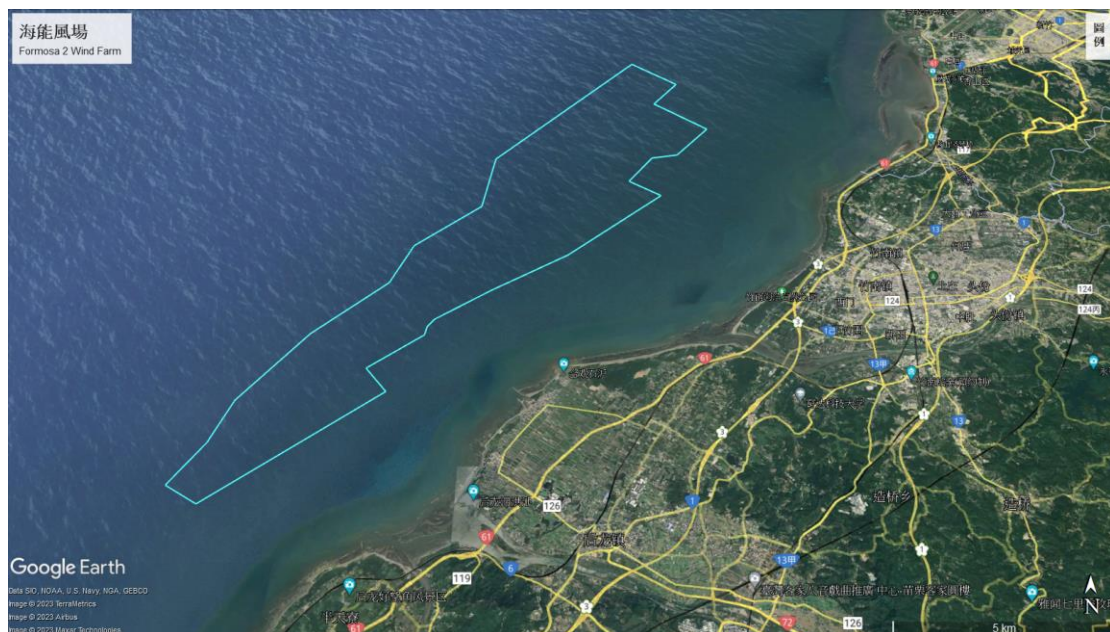
海能風力發電股份有限公司

112 年 8 月編製

一、簡介 Introduction

海能風電為 JERA 捷熱能源(49%)、綠投資集團(26%)及風睿能源(25%)合作開發的離岸風場，總裝置容量為 376 MW，已於 112 (本) 年 1 月完成 47 座風機安裝，並於 3 月完成所有風機併聯作業，每年可為 38 萬戶家庭提供潔淨電力。本年 7 月風場淨發電量約 4,100 萬度。JERA, Green Investment Group, and SRE developed the offshore wind farm, Formosa 2. JERA holds a 49% stake, Green Investment Group holds 26%, and SRE holds 25%. The total installed capacity is 376 MW. In January of the 2023, 47 wind turbines were installed, and in March, all turbines were successfully connected to the grid. The wind farm can provide clean electricity to approximately 380,000 households annually. In July of this year, the wind farm generated a net power output of approximately 41 million kWh.

▼風場位置圖 Windfarm Location



二、業務報告 Business Report

1.裝置容量 Capacity

| Type | Name | WTG No. | Actual Value(kW) | Year-on-year change (%) | Note |
|-------|------|---------|------------------|-------------------------|------|
| Total | | | 256,000 | -- | |

2.發電量 Production

| Type | Name | WTG No. | 毛發電量 Gross Production | | 廠用電量 Internal Usage | | 淨發電量 Net Production | | 自用電量 Self-consumption | | Note |
|-------|------|---------|-----------------------|-------------------------|---------------------|-------------------------|---------------------|-------------------------|-----------------------|-------------------------|------|
| | | | Actual Value (kWh) | Year-on-year change (%) | Actual Value (kWh) | Year-on-year change (%) | Actual Value (kWh) | Year-on-year change (%) | Actual Value (kWh) | Year-on-year change (%) | |
| Total | | | 41,855,522 | -- | 847,274 | -- | 41,008,248 | -- | -- | -- | |

3.發電設備運作情形 Operating Status

| Ty pe | Na me | WT G No. | 容量因數 Capacity Factor | | | | 可用率 Availability Rated Capacity | | | | 最大出力值 Maximum Output Value | | | | No te |
|----------|----------|----------------|--------------------------------|---|--|---|------------------------------------|---|--|---|--------------------------------|---|--|---|----------|
| | | | Current Month | | From the beginning of the month until the current month | | Current Month | | From the beginning of the month until the current month | | Current Month | | From the beginning of the month until the current month | | |
| | | | Act ual Val ue (%) | Year -on- year chan ge (%) | Act ual Val ue (%) | Year -on- year chan ge (%) | Act ual Val ue (%) | Year -on- year chan ge (%) | Act ual Val ue (%) | Year -on- year chan ge (%) | Act ual Val ue (%) | Year -on- year chan ge (%) | Act ual Val ue (%) | Year -on- year chan ge (%) | |
| Total | | | 21.5 | -- | 25.4 | -- | 91.8 | -- | 91.8 | -- | 87.6 | -- | 94.6 | -- | |

4.售予公用售電業之售電量 Power Sale

| Type | 本月 Current | | 累計 From the beginning of the month until the current month | |
|-------|--------------------|-------------------------|--|-------------------------|
| | Actual Value (kWh) | Year-on-year change (%) | Actual Value (kWh) | Year-on-year change (%) |
| Wind | 41,008,728 | -- | 663,535,721 | -- |
| Total | 41,008,728 | -- | 663,535,721 | -- |

備註：本統計計入已取得電業執照之 32 台風機之售電量。The statistics include the electricity sales from 32 wind turbines that have obtained EBL.

三、財務報告 Financial Report

收支實績比較表 Revenue and Expense

| Item | 本月 Current | | | 累計 Accumulating | | |
|---------------------------------|------------------|-------------------------|------------------|------------------|-------------------------|------------------|
| | Actual Value (A) | Year-on-year change (B) | Difference (A-B) | Actual Value (C) | Year-on-year change (D) | Difference (C-D) |
| 1. 營業收入 Operating Revenue | 446,863,441 | | | 4,761,442,356 | | |
| 電業收入 Electricity Revenue | 446,863,441 | | | 4,761,442,356 | | |
| 其他收入 Other Operating Revenue | | | | | | |
| 2. 營業支出 Operating Expenses | 459,325,533 | | | 2,507,709,952 | | |
| 營業成本 Operating Costs | | | | | | |
| 營業費用 Operating Expenses | | | | | | |
| 3. 營業收益 Operating Income | (12,462,092) | | | 2,253,732,404 | | |
| 4. 稅前盈餘 Pre-tax Earnings | (326,363,889) | | | 1,468,713,071 | | |

備註：公司依照 EAS 規定認列應計營業收入。All financial statements are in accordance with EAS.



FORMOSA 2